

CONSTRUCTION PLANS FOR RECLAIMED WATER DISTRIBUTION SYSTEM EXPANSION

OPTION T-7

IMPROVEMENTS BY

CITY OF NAPLES, FLORIDA
UTILITIES DEPARTMENT

380 RIVERSIDE CIRCLE
NAPLES, FL 34102
PHONE: (239) 213-4745



CITY OF NAPLES, FLORIDA

John Sorey III, Mayor
Gary Price, Vice Mayor
Bill Barnett, Council Member
Doug Finley, Council Member
Teresa Heilmann, Council Member
Sam Saad III, Council Member
Margaret "Dee" Sulick, Council Member
William Moss, City Manager
Robert Middleton, Utility Director
Justin Frederiksen, Deputy Utility Director

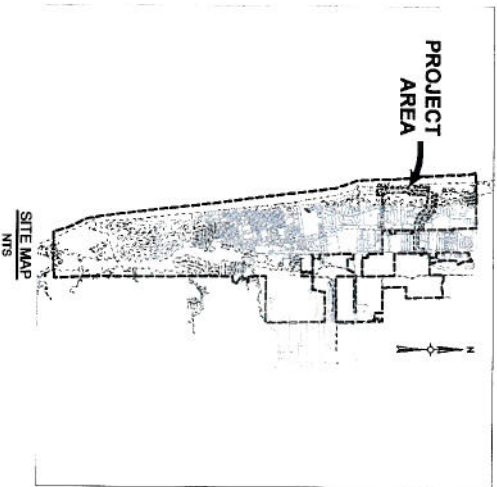
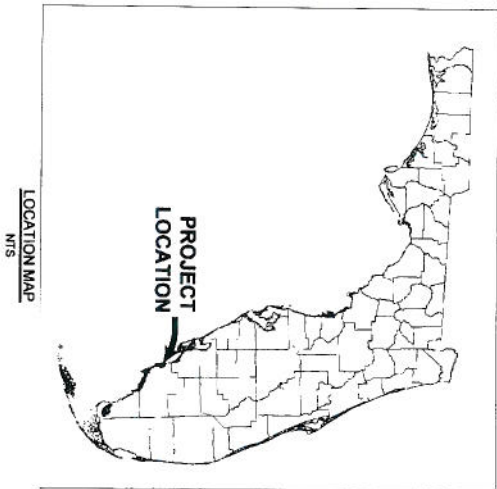
UTILITY SERVICES

WATER
NAPLES UTILITY DEPARTMENT
1000 W. GULF SHORE BOULEVARD
NAPLES, FL 34102
(239) 213-4746

SEWER
NAPLES UTILITY DEPARTMENT
1000 W. GULF SHORE BOULEVARD
NAPLES, FL 34102
(239) 213-4746

STORMWATER
NAPLES UTILITY DEPARTMENT
1000 W. GULF SHORE BOULEVARD
NAPLES, FL 34102
(239) 213-4746

NOTE:
DRAWING SHALL ONLY BE USED FOR THE PROJECT AND SITE SPECIFIC TO THE PROJECT. ANY OTHER USE IS PROHIBITED.
FOR MORE INFORMATION, CONTACT THE PROJECT MANAGER.
(239) 213-4746

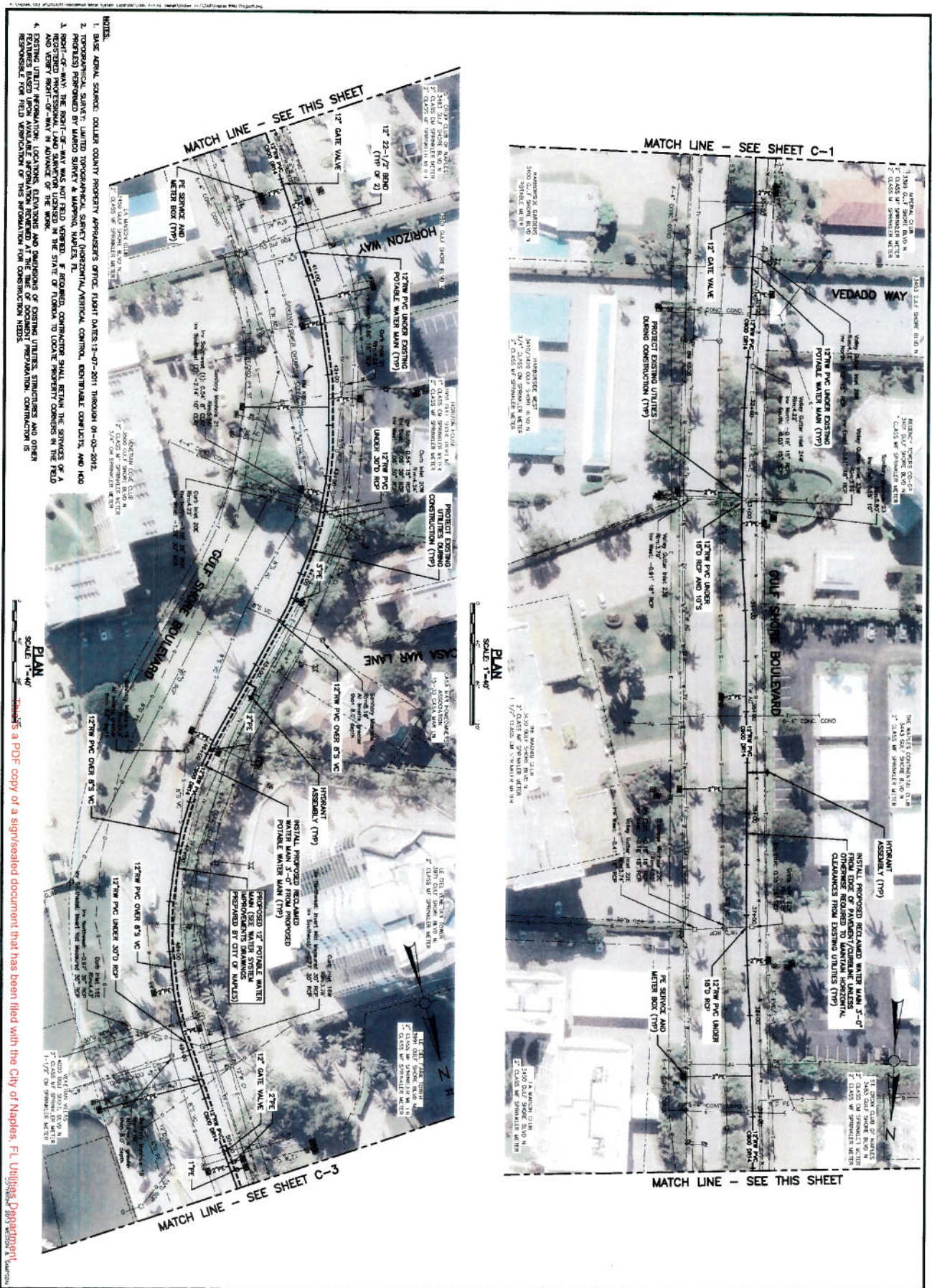


APRIL 2013

Weston & Sampson

42110 METRO PARKWAY, SUITE 250, FORT MYERS, FL 33917
CERTIFICATE OF AUTHORIZATION NO. 28190

SHEET NO.	DRAWING NO.	TITLE
1	-	COVER
2	C-1	GENERAL NOTES / KEY MAP
3	C-1	GULF SHORE BLVD STA 10+00 TO 29+52
4	C-2	GULF SHORE BLVD STA 29+52 TO 59+44
5	C-3	GULF SHORE BLVD STA 59+44 TO 70+27
6	C-4	PARK SHORE DRIVE STA 10+00 TO 31+23
7	C-5	PARK SHORE DRIVE STA 31+23 TO 53+67
8	C-6	PARK SHORE DRIVE STA 53+67 TO 77+36
9	C-7	CYPRESS WOODS DRIVE STA 57+97 TO 77+36
10	C-8	14TH STREET NORTH STA 81+46 TO 89+66
11	C-9	VENTNATAN BAY CHANNEL CROSSING
12	C-10	HDD PLAN AND PROFILE TAMAMI TRAIL (US 41) CROSSING
13	C-11	3981-4021 GULF SHORE BOULEVARD N BEST MANAGEMENT PRACTICES DETAILS
14	C-12	4041-4151 GULF SHORE BOULEVARD N BEST MANAGEMENT PRACTICES DETAILS
15	C-13	CITY OF NAPLES STANDARD DETAILS
16	C-14	STANDARD DETAILS



NOTES:

1. BASE AERIAL SURVEY: COLLIER COUNTY PROPERTY APPRAISERS OFFICE: PLAT DATES: 12-07-2011 THROUGH 01-03-2012.
2. PROJECTED PROPERTY LINES: PROPERTY APPRAISERS OFFICE: PLAT DATES: 12-07-2011 THROUGH 01-03-2012.
3. RIGHT-OF-WAY: THE RIGHT-OF-WAY WAS NOT FIELD VERIFIED. IF REQUIRED, CONFRONTORS SHALL RETAIN THE SERVICES OF A REGISTERED PROFESSIONAL LAND SURVEYOR LICENSED IN THE STATE OF FLORIDA TO LOCATE PROPERTY CORNERS IN THE FIELD AND VERIFY RIGHT-OF-WAY IN ADVANCE OF THE WORK.
4. EXISTING UTILITY INFORMATION: LOCATIONS, ELEVATIONS AND DIMENSIONS OF EXISTING UTILITIES, STRUCTURES AND OTHER FEATURES SHOWN ON THIS PLAN ARE BASED ON THE INFORMATION PROVIDED BY THE CONFRONTORS. THE CONTRACTOR IS RESPONSIBLE FOR FIELD VERIFICATION OF THIS INFORMATION FOR CONSTRUCTION NEEDS.

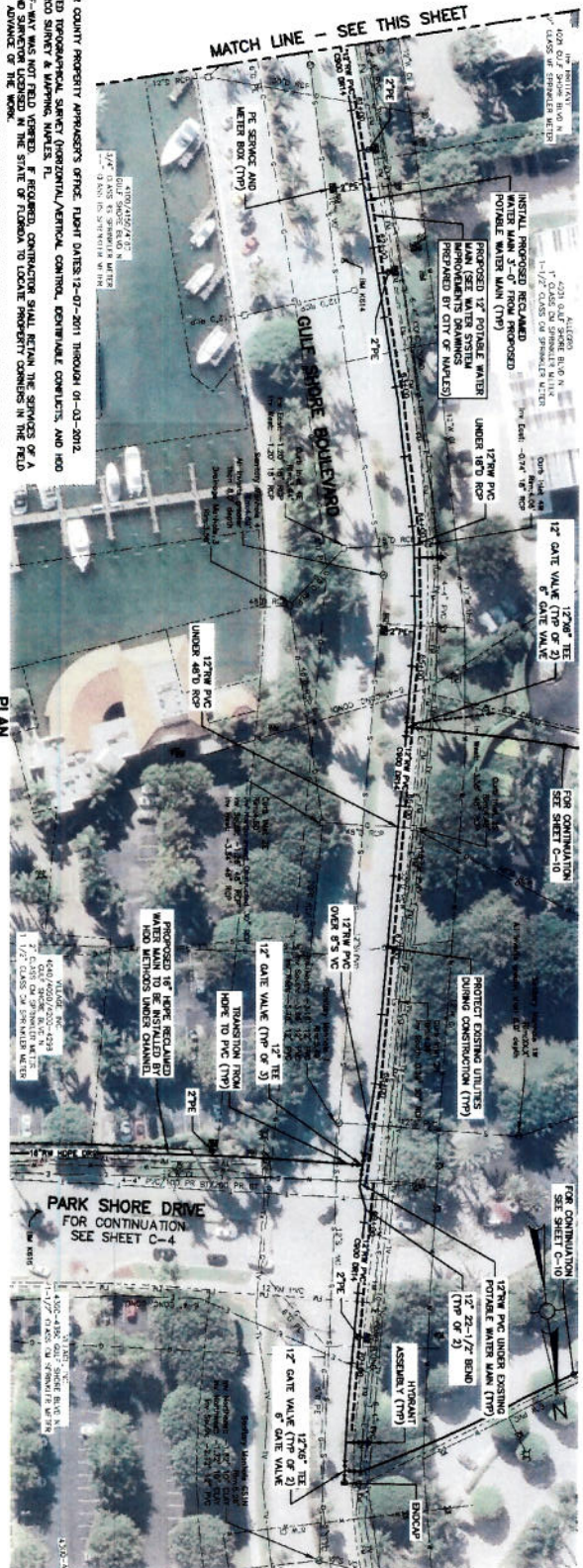
PLAN
SCALE: 1"=40'

This is a PDF copy of a signed/sealed document that has been filed with the City of Naples, FL Utilities Department.

	CITY OF NAPLES, FLORIDA RECLAIMED WATER DISTRIBUTION SYSTEM EXPANSION OPTION T-7 GULF SHORE BOULEVARD STA 29+52 TO 50+44		(RECLAIMED WATER) Jeffrey A. Wilson, P.E. License No. 41762	1 04/13 COM RW-JAW ISSUED FOR BIDDING No. Date Dr. By Dr. By App. By Descrip.		 420 Metro Parkway, Suite 250 Fort Myers, FL 33908 (239) 437-4001 (800) 848380 Certificate of Authorization No. 28180 www.westonandsampson.com
	SHEET 4 OF 16	FILE NO. _____ CAD NO. _____ SCALE: NAPLES (RWM) NOTED: _____ CONTRACT: _____ JOB NO.: 2120311 DR BY: _____ DESIGNED BY: _____ CHECKED BY: _____ APPROVED BY: _____		1 04/13 COM RW-JAW ISSUED FOR BIDDING No. Date Dr. By Dr. By App. By Descrip.		

NOTES:

1. BASE MAP, SOURCE: COLLIER COUNTY PROPERTY APPRAISER'S OFFICE, FLIGHT DATES: 12-07-2011 THROUGH 01-02-2012.
2. TOPOGRAPHICAL SURVEY: LIMITED TOPOGRAPHICAL SURVEY (PERMANENT/VERTICAL CONTROL, ELEVATION CONTROL, AND HOI POINTS) PERFORMED BY WARD SURVEY & MAPPING, NAPLES, FL.
3. RIGHT-OF-WAY: THE RIGHT-OF-WAY WAS NOT FIELD VERIFIED. IF REQUIRED, CONTRACTOR SHALL RETAIN THE SERVICES OF A PROFESSIONAL SURVEYOR TO FIELD VERIFY THE RIGHT-OF-WAY IN THE STATE OF FLORIDA TO LOCATE PROPERTY CORNERS IN THE FIELD AND VERIFY RIGHT-OF-WAY IN ADVANCE OF THE WORK.
4. EXISTING UTILITY INFORMATION, LOCATIONS, ELEVATIONS AND DIMENSIONS OF EXISTING UTILITIES, STRUCTURES AND OTHER FEATURES BASED UPON AVAILABLE INFORMATION REFERRED AT THE TIME OF DOCUMENT PREPARATION. CONTRACTOR IS RESPONSIBLE FOR FIELD VERIFICATION OF THIS INFORMATION FOR CONSTRUCTION NEEDS.



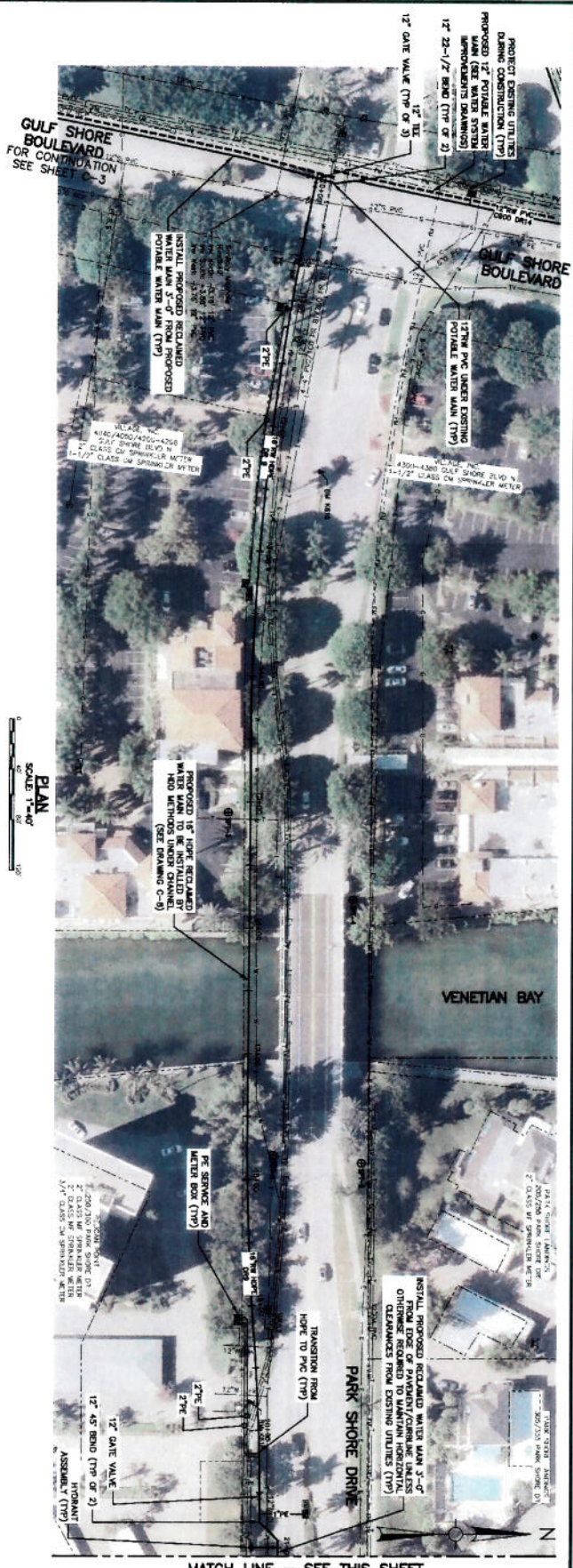
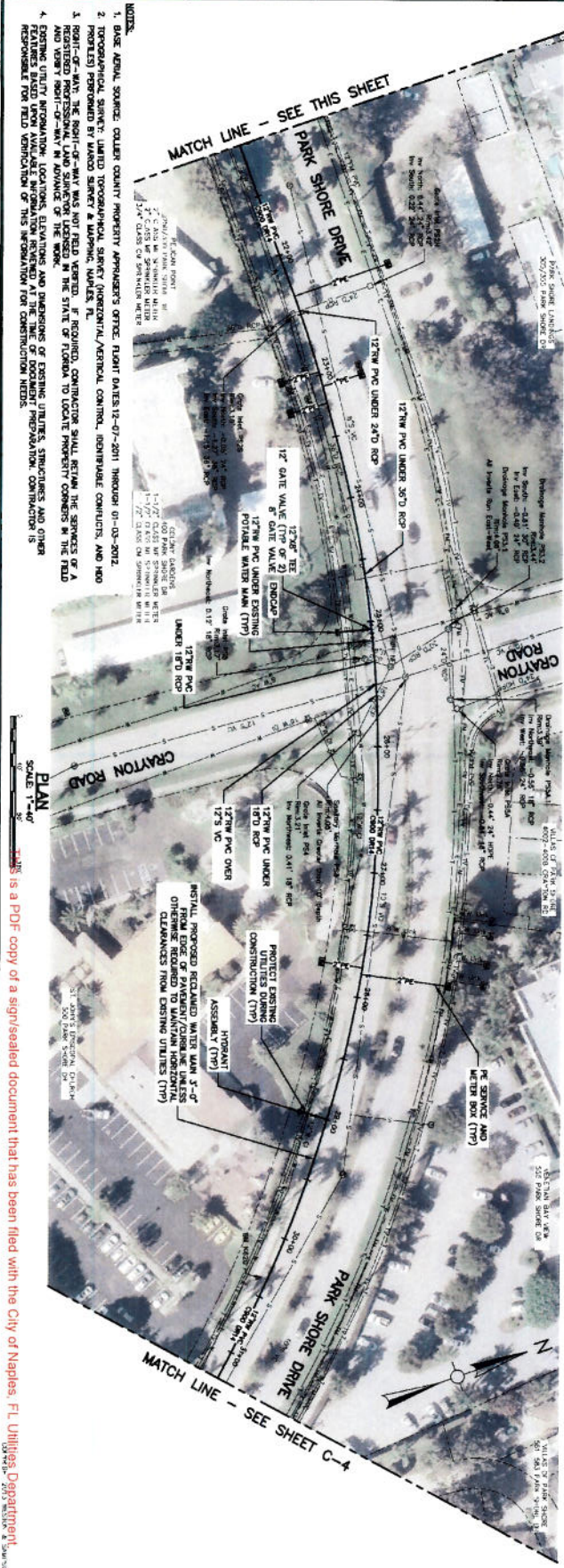
SHEET 5 OF 16

CITY OF NAPLES, FLORIDA
 RECLAIMED WATER DISTRIBUTION SYSTEM EXPANSION
 OPTION T-7
GULF SHORE BOULEVARD STA 50+44 TO 70+27

(RECLAIMED WATER)
Signature
 4-11-2011

No.	Date	Dr. By	Ch. By	App. By	Description
1	04/13	DCM	RLH	LAW	ISSUED FOR BIDDING

Weston & Sampson
 4810 Metro Parkway, Suite 250
 Fort Myers, FL 33918
 (888) 497-4602 (800) 8ANAPSON
 Certificate of Authorization No. 24196
 www.westonandsampson.com



	CITY OF NAPLES, FLORIDA RECLAIMED WATER DISTRIBUTION SYSTEM EXPANSION OPTION T-7		(310) 4571 (WATER)								
	PARK SHORE DRIVE STA 10+00 TO 31+23										
SHEET 6 OF 16	LABEL NO. NAPLES RWM1	SCALE NOTED	CONTRACT NO. 2120311	DATE JUNE 2013	DRAWN BY JAW	CHECKED BY GBY	APPR'D BY JAW	ISSUED FOR BIDDING	DESCRIPTION No. City Job By App. By		
420 Main Parkway, Suite 200 Fort Myers, FL 33906 (202) 497-4600 (800) 8AMPSON Certificate of Authorization No. 26180 www.westonandsampson.com											

This is a PDF copy of a signed/sealed document that has been filed with the City of Naples, FL, Utilities Department.

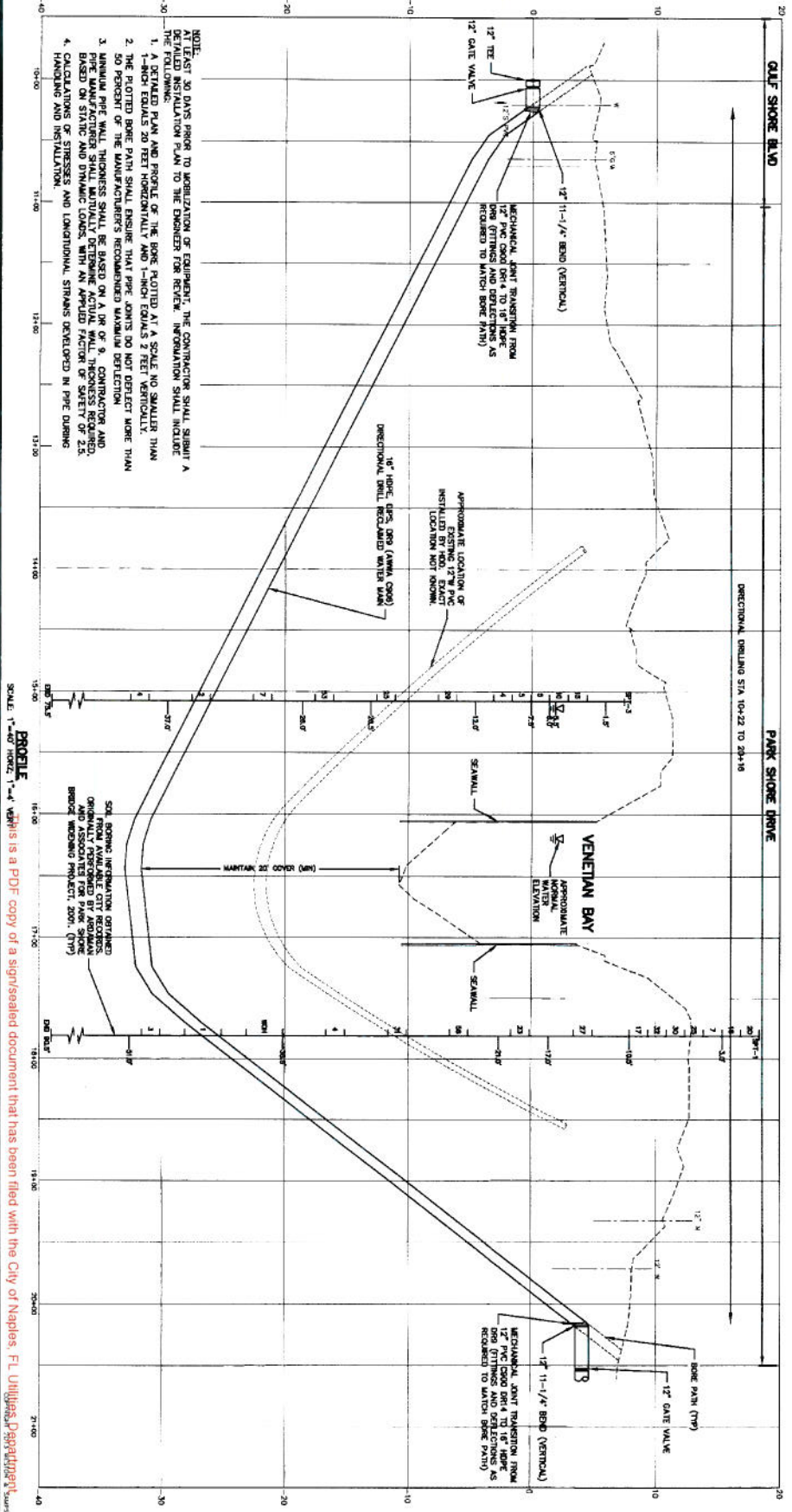


- NOTES:**
1. BASE: ASBL SOURCE: COLLIER COUNTY PROPERTY APPRAISER'S OFFICE, PLANT DATES: 12-07-2011 THROUGH 01-03-2012.
 2. TOPOGRAPHICAL SURVEY: LIMITED TOPOGRAPHICAL SURVEY (HORIZONTAL/VERTICAL CONTROL, IDENTIFIABLE CORNERS, AND 800 PROFILES) PERFORMED BY LAMBO SURVEY & MAPPING, NAPLES, FL.
 3. RIGHT-OF-WAY: THE RIGHT-OF-WAY WAS NOT FIELD VERIFIED. IF REQUIRED, CONTRACTOR SHALL RETAIN THE SERVICES OF A PROFESSIONAL SURVEYOR TO FIELD VERIFY THE RIGHT-OF-WAY. LOCATIONS IN THE STATE OF FLORIDA TO LOCATE PROPERTY CORNERS IN THE FIELD AND VERIFY POSITIONS SHALL BE IN ACCORDANCE WITH THE FLORIDA SURVEYING BOARD'S PRACTICE STANDARDS.
 4. EXISTING UTILITY INFORMATION, LOCATIONS, ELEVATIONS AND DIMENSIONS OF EXISTING UTILITIES, STRUCTURES AND OTHER FEATURES BASED UPON AVAILABLE INFORMATION OBTAINED AT THE TIME OF OCCUPANT INFORMATION. CONTRACTOR IS RESPONSIBLE FOR FIELD VERIFICATION OF THIS INFORMATION FOR CONSTRUCTION NEEDS.

PLAN
SCALE: 1"=40'

This is a PDF copy of a signed/sealed document that has been filed with the City of Naples, FL Utilities Department.

C-5	CITY OF NAPLES, FLORIDA RECLAIMED WATER DISTRIBUTION SYSTEM EXPANSION OPTION T-7										(PROJ. AND WATER) <i>[Signature]</i> 4-11-2013	Weston & Sampson 4210 Metro Parkway, Suite 200 Fort Myers, FL 33906 (239) 437-4601 (800) 5ANPSON Certificate of Authorization No. 28160 www.westonandsampson.com	
	PARK SHORE DRIVE STA 31+23 TO 53+87												
FILE NO.	CADD NO.	SCALE	CONTRACT	JOB NO.	ISSUED BY	DRAWN BY	CHECKED BY	APP. BY	DATE	DESCRIPTION	DATE	DESCRIPTION	
	NAPLES RWM	NOTED		2120311					04/13	CCM	RLM	JAW	ISSUED FOR BIDDING
											DATE	DESCRIPTION	
											APP. BY	DATE	



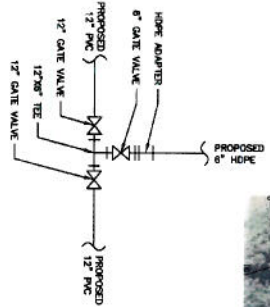
C-6
 SHEET 10 OF 16

CITY OF NAPLES, FLORIDA
 RECLAIMED WATER DISTRIBUTION SYSTEM EXPANSION
 OPTION T-7
**HDD PLAN AND PROFILE
 VENETIAN BAY CROSSING**

NO.	DATE	BY	CHK BY	APP BY	DESCRIPTION
1	04/12	DCM	RLJ	JAW	ISSUED FOR BIDDING

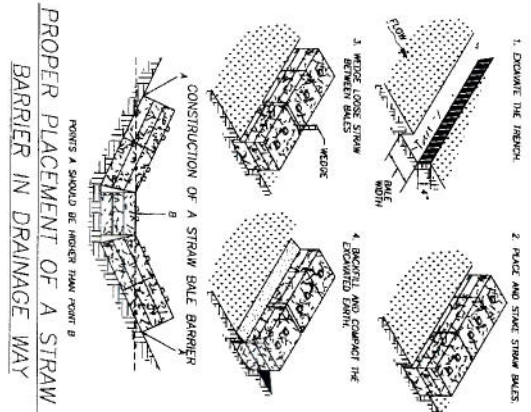
Weston & Sampson, Inc.
 4210 Indus Parkway, Suite 250
 Fort Myers, FL 33916
 (239) 437-6601 (800) 543-5899
 Certificate of Authorization No. 28190
 www.westonandsampson.com

1. IT SHALL BE THE DUTY OF THE CONTRACTOR TO MAINTAIN THE PROPER ALIGNMENT AND FITTINGS AS REQUIRED TO MAINTAIN ALIGNMENT AND PROTECT EXISTING UTILITIES DURING CONSTRUCTION (TYP)
2. BEST AVAILABLE SOURCE: COLLEGE COUNTY PROPERTY APPLICANTS OFFICE: PLANT DATES: 12-07-2011 THROUGH 01-03-2012
3. TOPOGRAPHICAL SURVEY: UNITED STATES GEOLOGICAL SURVEY: NATIONAL/VERTICAL CONTROL: IDENTIFIABLE CONTROL: AND PROPOSED POINTS PERFORMED BY MARCO SURVEY & MAPPING, LLC
4. RIGHT-OF-WAY: THE RIGHT-OF-WAY WAS NOT FIELD VERIFIED. IF REQUIRED, CONTRACTOR SHALL RETAIN THE SERVICES OF A REGISTERED PROFESSIONAL LAND SURVEYOR LICENSED IN THE STATE OF FLORIDA TO LOCATE PROPERTY CORNERS IN THE FIELD AND VERIFY RIGHT-OF-WAY IN ADVANCE OF THE WORK.
5. FEATURES: FIELD VERIFICATION OF EXISTING UTILITIES, STRUCTURES AND OTHER FEATURES SHOWN ON THIS PLAN SHALL BE THE RESPONSIBILITY OF THE CONTRACTOR. THE CONTRACTOR IS RESPONSIBLE FOR FIELD VERIFICATION OF THIS INFORMATION FOR CONSTRUCTION PURPOSES.

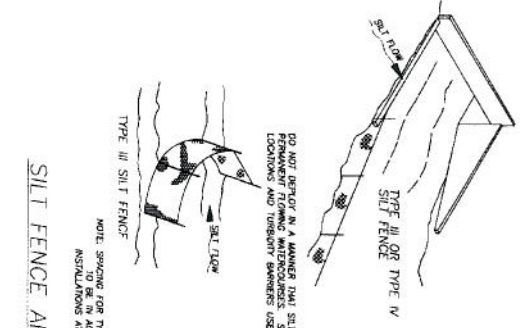


This is a PDF copy of a signed/sealed document that has been filed with the City of Naples, FL Utilities Department.

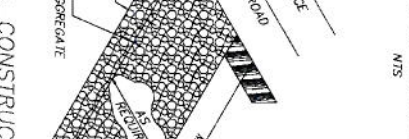
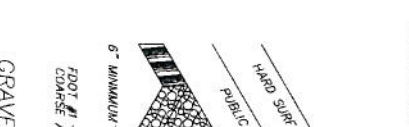
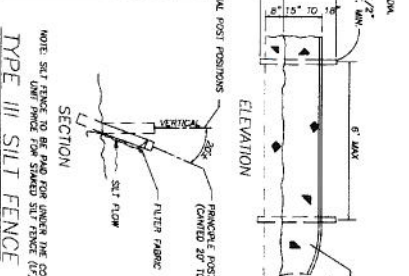
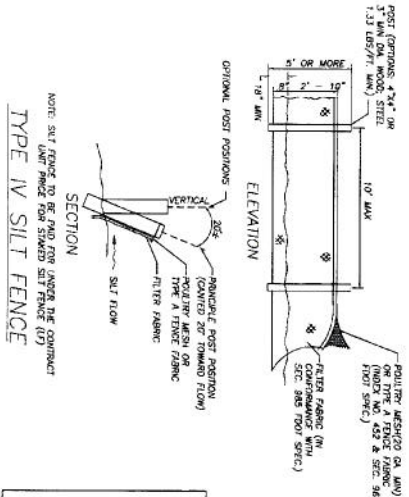
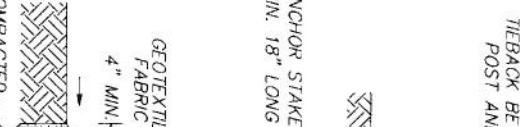
C-10 SHEET 12 OF 16	CITY OF NAPLES, FLORIDA RECLAIMED WATER DISTRIBUTION SYSTEM EXPANSION OPTION T-7		(RECLAIMED WATER) Jeffrey A. Wilson, P.E. FL License No. 41322		Weston & Sampson 4200 Metro Parkway, Suite 800 Fort Myers, FL 33908 (239) 437-4601 (800) 543-6809 Certificate of Authorization No. 28150 www.westonandsampson.com
	3991-4021 GULF SHORE BOULEVARD N 4041-4151 GULF SHORE BOULEVARD N	SCALE: NOTED	CONTRACT: 2120311	DATE: 05/13/20	



PROPER PLACEMENT OF A STRAW BALE BARRIER IN DRAINAGE WAY



SILT FENCE APPLICATIONS



NOTE:
 1. THE USE OF STRAW BALE BARRIERS AND TRENCH BARRIERS IS RECOMMENDED AS NECESSARY TO CONTAIN EROSION.
 2. CONTRACTOR SHALL INSTALL SILT FENCE AND TRENCH BARRIERS PER FOOT INDEX 102 (OR APPROVED EQUIVALENT) PRIOR TO ANY SITE ACTIVITIES.
 3. REFER TO THE TRAINING, GRADING AND DRAINAGE INFORMATION PLAN FOR ADDITIONAL INFORMATION.

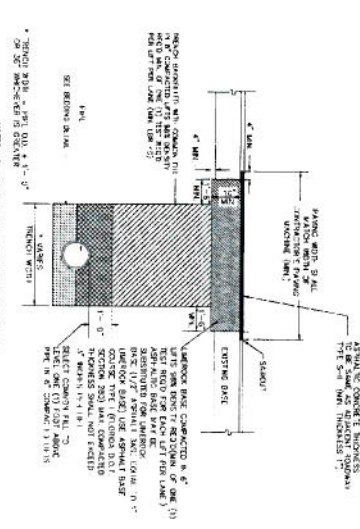
NOTE: SILT FENCE TO BE PAID FOR UNDER THE CONTRACT UNIT PRICE FOR SHAVED SILT FENCE (U)

NOTE: SILT FENCE TO BE PAID FOR UNDER THE CONTRACT UNIT PRICE FOR SHAVED SILT FENCE (U)

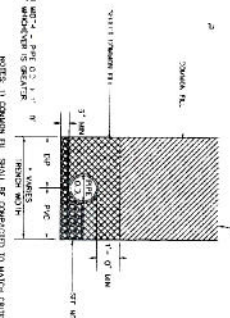
NOTE: SILT FENCE TO BE PAID FOR UNDER THE CONTRACT UNIT PRICE FOR SHAVED SILT FENCE (U)

This is a PDF copy of a signed document that has been filed with the City of Naples, FL, Utilities Department.

<p>C-11</p> <p>FILE NO. _____</p> <p>SCALE: _____</p> <p>DATE: _____</p>	<p>CITY OF NAPLES, FLORIDA RECLAIMED WATER DISTRIBUTION SYSTEM EXPANSION OPTION T-7</p>				<p>(RECLAIMED WATER)</p> <p>DATE: 11-11-2013</p> <p>BY: [Signature]</p>	<p>1 04/13 DCW RLF LAW ISSUED FOR BIDDING</p> <p>2 04/13 DCW RLF LAW ISSUED FOR BIDDING</p>			
	<p>BEST MANAGEMENT PRACTICES DETAILS</p>					<p>WESTON & SAMPSON</p> <p>4210 Metro Parkway, Suite 200 Fort Myers, FL 33918 (813) 497-4400 (800) 848-5700 Certificate of Accreditation No. 24190 www.westonandsampson.com</p>			



TRENCH BACKFILL IN PAVED ROADWAYS DETAIL
N.T.S.



PIPE BEDDING AND BACKFILL DETAIL
N.T.S.

FOOT PER INCH CHANGED AT CONTACT COROSING

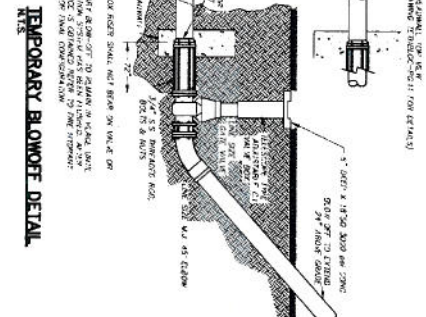
SECTION	FOOT PER INCH	CHANGED AT CONTACT COROSING
1	1/2"	1/2"
2	1/2"	1/2"
3	1/2"	1/2"
4	1/2"	1/2"
5	1/2"	1/2"
6	1/2"	1/2"
7	1/2"	1/2"
8	1/2"	1/2"
9	1/2"	1/2"
10	1/2"	1/2"
11	1/2"	1/2"
12	1/2"	1/2"
13	1/2"	1/2"
14	1/2"	1/2"
15	1/2"	1/2"
16	1/2"	1/2"
17	1/2"	1/2"
18	1/2"	1/2"
19	1/2"	1/2"
20	1/2"	1/2"
21	1/2"	1/2"
22	1/2"	1/2"
23	1/2"	1/2"
24	1/2"	1/2"
25	1/2"	1/2"
26	1/2"	1/2"
27	1/2"	1/2"
28	1/2"	1/2"
29	1/2"	1/2"
30	1/2"	1/2"
31	1/2"	1/2"
32	1/2"	1/2"
33	1/2"	1/2"
34	1/2"	1/2"
35	1/2"	1/2"
36	1/2"	1/2"
37	1/2"	1/2"
38	1/2"	1/2"
39	1/2"	1/2"
40	1/2"	1/2"
41	1/2"	1/2"
42	1/2"	1/2"
43	1/2"	1/2"
44	1/2"	1/2"
45	1/2"	1/2"
46	1/2"	1/2"
47	1/2"	1/2"
48	1/2"	1/2"
49	1/2"	1/2"
50	1/2"	1/2"
51	1/2"	1/2"
52	1/2"	1/2"
53	1/2"	1/2"
54	1/2"	1/2"
55	1/2"	1/2"
56	1/2"	1/2"
57	1/2"	1/2"
58	1/2"	1/2"
59	1/2"	1/2"
60	1/2"	1/2"
61	1/2"	1/2"
62	1/2"	1/2"
63	1/2"	1/2"
64	1/2"	1/2"
65	1/2"	1/2"
66	1/2"	1/2"
67	1/2"	1/2"
68	1/2"	1/2"
69	1/2"	1/2"
70	1/2"	1/2"
71	1/2"	1/2"
72	1/2"	1/2"
73	1/2"	1/2"
74	1/2"	1/2"
75	1/2"	1/2"
76	1/2"	1/2"
77	1/2"	1/2"
78	1/2"	1/2"
79	1/2"	1/2"
80	1/2"	1/2"
81	1/2"	1/2"
82	1/2"	1/2"
83	1/2"	1/2"
84	1/2"	1/2"
85	1/2"	1/2"
86	1/2"	1/2"
87	1/2"	1/2"
88	1/2"	1/2"
89	1/2"	1/2"
90	1/2"	1/2"
91	1/2"	1/2"
92	1/2"	1/2"
93	1/2"	1/2"
94	1/2"	1/2"
95	1/2"	1/2"
96	1/2"	1/2"
97	1/2"	1/2"
98	1/2"	1/2"
99	1/2"	1/2"
100	1/2"	1/2"

TYPICAL CONTACT CROSSING DETAIL
N.T.S.

RESISTANT PIPE SCHEDULE

PIPE SIZE (N.E.P.T.)	RESISTANT PIPE SCHEDULE
1/2"	40
3/4"	40
1"	40
1 1/4"	40
1 1/2"	40
2"	40
2 1/2"	40
3"	40
3 1/2"	40
4"	40
4 1/2"	40
5"	40
5 1/2"	40
6"	40
6 1/2"	40
7"	40
7 1/2"	40
8"	40
8 1/2"	40
9"	40
9 1/2"	40
10"	40
10 1/2"	40
11"	40
11 1/2"	40
12"	40
12 1/2"	40
13"	40
13 1/2"	40
14"	40
14 1/2"	40
15"	40
15 1/2"	40
16"	40
16 1/2"	40
17"	40
17 1/2"	40
18"	40
18 1/2"	40
19"	40
19 1/2"	40
20"	40
20 1/2"	40
21"	40
21 1/2"	40
22"	40
22 1/2"	40
23"	40
23 1/2"	40
24"	40
24 1/2"	40
25"	40
25 1/2"	40
26"	40
26 1/2"	40
27"	40
27 1/2"	40
28"	40
28 1/2"	40
29"	40
29 1/2"	40
30"	40
30 1/2"	40
31"	40
31 1/2"	40
32"	40
32 1/2"	40
33"	40
33 1/2"	40
34"	40
34 1/2"	40
35"	40
35 1/2"	40
36"	40
36 1/2"	40
37"	40
37 1/2"	40
38"	40
38 1/2"	40
39"	40
39 1/2"	40
40"	40
40 1/2"	40
41"	40
41 1/2"	40
42"	40
42 1/2"	40
43"	40
43 1/2"	40
44"	40
44 1/2"	40
45"	40
45 1/2"	40
46"	40
46 1/2"	40
47"	40
47 1/2"	40
48"	40
48 1/2"	40
49"	40
49 1/2"	40
50"	40
50 1/2"	40
51"	40
51 1/2"	40
52"	40
52 1/2"	40
53"	40
53 1/2"	40
54"	40
54 1/2"	40
55"	40
55 1/2"	40
56"	40
56 1/2"	40
57"	40
57 1/2"	40
58"	40
58 1/2"	40
59"	40
59 1/2"	40
60"	40
60 1/2"	40
61"	40
61 1/2"	40
62"	40
62 1/2"	40
63"	40
63 1/2"	40
64"	40
64 1/2"	40
65"	40
65 1/2"	40
66"	40
66 1/2"	40
67"	40
67 1/2"	40
68"	40
68 1/2"	40
69"	40
69 1/2"	40
70"	40
70 1/2"	40
71"	40
71 1/2"	40
72"	40
72 1/2"	40
73"	40
73 1/2"	40
74"	40
74 1/2"	40
75"	40
75 1/2"	40
76"	40
76 1/2"	40
77"	40
77 1/2"	40
78"	40
78 1/2"	40
79"	40
79 1/2"	40
80"	40
80 1/2"	40
81"	40
81 1/2"	40
82"	40
82 1/2"	40
83"	40
83 1/2"	40
84"	40
84 1/2"	40
85"	40
85 1/2"	40
86"	40
86 1/2"	40
87"	40
87 1/2"	40
88"	40
88 1/2"	40
89"	40
89 1/2"	40
90"	40
90 1/2"	40
91"	40
91 1/2"	40
92"	40
92 1/2"	40
93"	40
93 1/2"	40
94"	40
94 1/2"	40
95"	40
95 1/2"	40
96"	40
96 1/2"	40
97"	40
97 1/2"	40
98"	40
98 1/2"	40
99"	40
99 1/2"	40
100"	40
100 1/2"	40

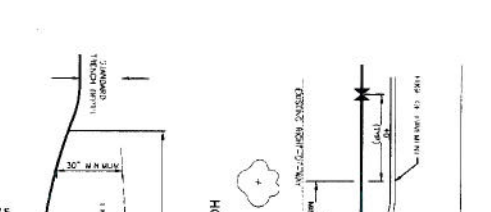
PIPE RESTRAINT SCHEDULE
N.T.S.



TEMPORARY BLOWOFF DETAIL
N.T.S.



TYPICAL SUBSEQUENT HORIZONTAL DIRECTIONAL DRILL (HDD) DETAIL
N.T.S.



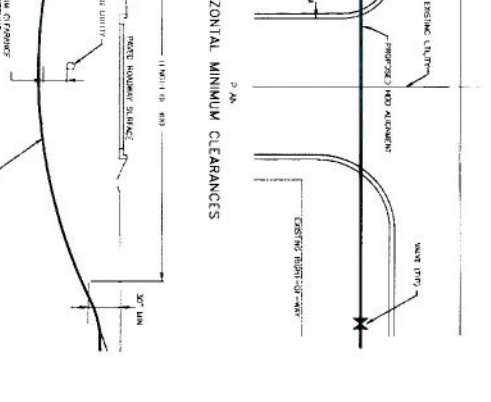
VERTICAL MINIMUM CLEARANCES
PROFILE



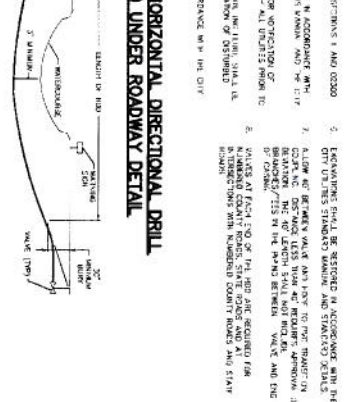
HORIZONTAL MINIMUM CLEARANCES
PROFILE



INSTALLATION NOTES



TYPICAL HORIZONTAL DIRECTIONAL DRILL (HDD) UNDER ROADWAY DETAIL
N.T.S.



TYPICAL CONTACT CROSSING DETAIL
N.T.S.



TYPICAL SUBSEQUENT HORIZONTAL DIRECTIONAL DRILL (HDD) DETAIL
N.T.S.

CITY OF NAPLES, FLORIDA RECLAIMED WATER DISTRIBUTION SYSTEM EXPANSION OPTION T-7

CITY OF NAPLES STANDARD DETAILS

WESTON & SAMPPSON
4210 Metro Parkway, Suite 250
Fort Myers, FL 33916
(888) 437-4401 (800) 8AMPPSON
Conditions of Acquisition No. 201490
www.westonandsampson.com

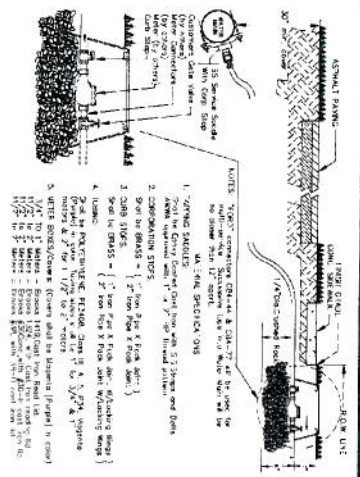
RECLAIMED WATER

DATE: 10/23/11
SCALE: NOTED
CONTRACT: 2120311
JOB NO. 2120311
DRAWN BY: [Signature]
CHECKED BY: [Signature]
APPROVED BY: [Signature]

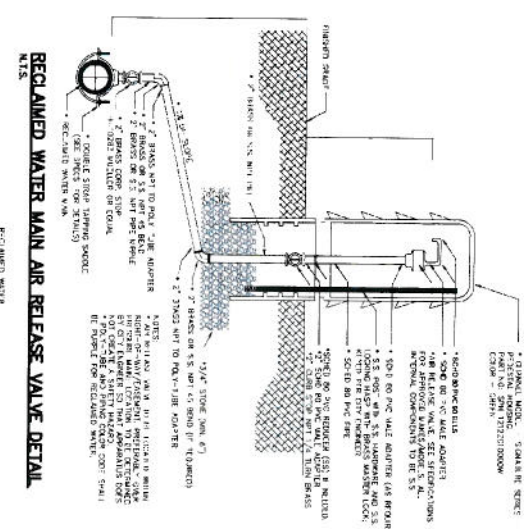
ISSUED FOR BIDDING

DATE: 10/23/11
BY: [Signature]

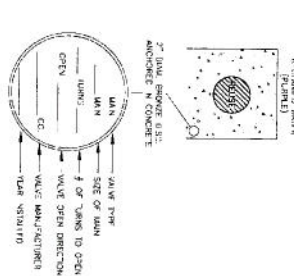
This is a PDF copy of a signed/sealed document that has been received/signed by others and is not to be used for any other purpose. ANY REVISIONS TO THIS DOCUMENT SHALL BE MADE BY THE ENGINEER OF RECORD AND ARE ACCEPTABLE FOR USE ON THE PROJECT OF NAPLES, FLORIDA. 10/23/11



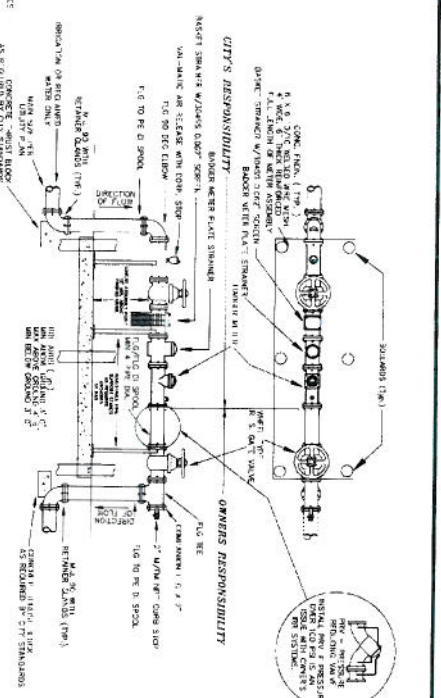
RECLAIMED WATER METER SETTING DETAIL
N.T.S.



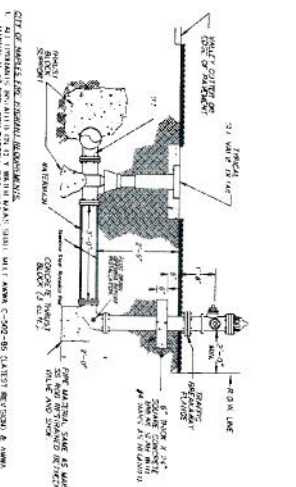
RECLAIMED WATER MAIN AIR RELEASE VALVE DETAIL
N.T.S.



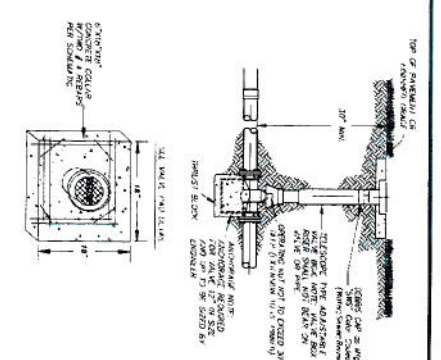
VALVE PAD DETAIL
N.T.S.



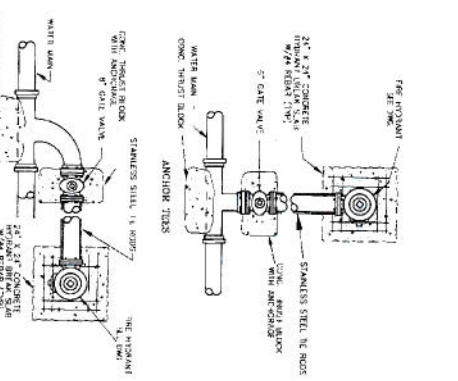
METER AND PRESSURE REDUCING VALVE DETAIL
N.T.S.



HYDRANT DETAIL
N.T.S.



TYPICAL IN-LINE VALVE
N.T.S.

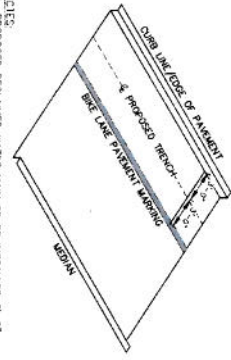


HYDRANT TIES DETAIL
N.T.S.

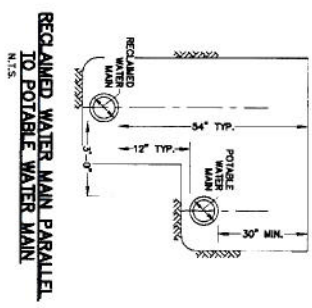
NOTE: THIS SHEET PRESENTS DETAILS WHICH HAVE BEEN DEVELOPED/DESIGNED BY OTHERS AND ARE STANDARD FOR THE CITY OF NAPLES WATER UTILITIES DEPARTMENT. THEY HAVE BEEN REVIEWED FOR THE CITY OF NAPLES WATER UTILITIES DEPARTMENT AND APPROVED FOR THE CITY OF NAPLES WATER UTILITIES DEPARTMENT.

<p>C-13</p>		<p>CITY OF NAPLES, FLORIDA RECLAIMED WATER DISTRIBUTION SYSTEM EXPANSION OPTION T-7</p>		<p>RECLAIMED WATER</p>		<p>DATE: 11-1-2013</p>	
<p>CITY OF NAPLES STANDARD DETAILS</p>		<p>SHEET 15 OF 16</p>		<p>DATE: 11-1-2013</p>		<p>DESCRIPTION</p>	
<p>NO. 1</p>	<p>DATE: 11-1-2013</p>	<p>BY: JAW</p>	<p>CHK BY: JAW</p>	<p>APP'D BY: JAW</p>	<p>DATE: 11-1-2013</p>	<p>DESCRIPTION: ISSUED FOR BIDDING</p>	<p>WESTON & SAMPSON</p>

Weston & Sampson
480 Main Parkway, Suite 200
Fort Myers, FL 33908
(239) 437-4601 (800) 8AMPSON
Certificate of Authorization No. 26180
www.westonandsampson.com

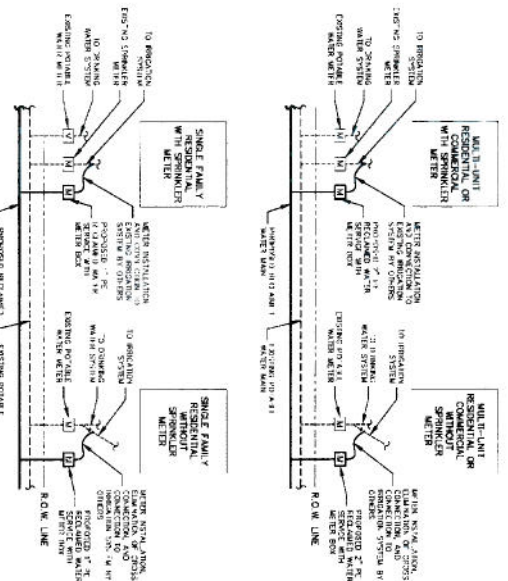


- NOTES:
1. PROPOSED RECLAIMED WATER MAIN TO BE INSTALLED 3'-0" BELOW EXISTING POTABLE WATER MAIN.
 2. SEE PAVEMENT RESTRICTION DETAIL FOR SAVING L.W.S. AND PARALLEL PROFILE.
- PROPOSED RECLAIMED WATER MAIN LOCATION**
- N.T.S.



OTHER PIPE	HORIZONTAL SEPARATION	CROSSINGS (1)	JOINT SPACING AT CROSSINGS (1)
STORM SEWER, SPOWATER (CONC. MAIN), RECLAIMED WATER (2)			
VACUUM SANITARY SEWER			
GRAVITY OR PRESSURE SANITARY SEWER, SANITARY RECLAIMED WATER (2)			
ON-DUCT SEWER TREATMENT AND DISPOSAL			

- NOTES:
1. WATER MAIN SHALL CROSS ABOVE OTHER PIPE. WHEN WATER MAIN MUST BE BELOW OTHER PIPE, THE MINIMUM SEPARATION IS 12 INCHES (2'-0" DIA. T.E.G.).
 2. RECLAIMED WATER MAIN SHALL BE INSTALLED UNDER POTABLE WATER MAIN.
 3. RECLAIMED WATER MAIN SHALL BE INSTALLED UNDER POTABLE WATER MAIN.
 4. RECLAIMED WATER MAIN SHALL BE INSTALLED UNDER POTABLE WATER MAIN.
 5. RECLAIMED WATER MAIN SHALL BE INSTALLED UNDER POTABLE WATER MAIN.
 6. RECLAIMED WATER MAIN SHALL BE INSTALLED UNDER POTABLE WATER MAIN.
- LOCATION OF PUBLIC WATER SYSTEM MAINS IN ACCORDANCE WITH F.A.C. RULE 62-555.314**
- N.T.S.



- NOTES:
1. CONTRACTOR TO INSTALL APPROPRIATELY SIZED TAPPING.
 2. CONTRACTOR TO PROVIDE AND INSTALL METER BOX, METER MAIN, AND METER.
 3. FINAL LOCATION OF METER BOX TO BE APPROVED BY THE CITY ENGINEER.
 4. CONTRACTOR TO MATCH EXISTING LETTER SIZE (IF ANY) AT THE METER BOX.
- RECLAIMED WATER SERVICE TRANSFER DETAIL**
- N.T.S.

This is a PDF copy of a signed/sealed document that has been filed with the City of Naples, FL Utilities Department.